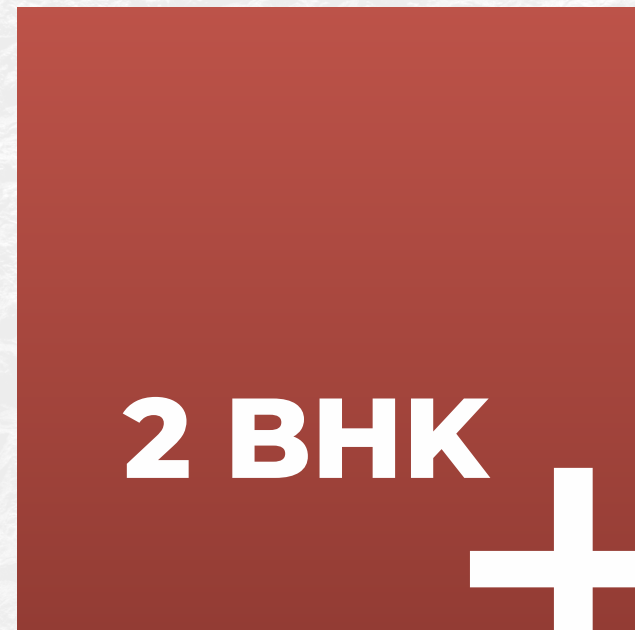




**HOME ISSUED IN PUBLIC INTEREST**



**HOMES** FOR THOSE  
WHO KNOW THE  
**VALUE OF PLUS**



BY



We believe in building landmarks



## WHO WE ARE

Aastha projects has been built with the vision of creating abodes that become peaceful paradises.

**33+** YEARS  
OF BUILDING A LEGACY



**3+** MILLION  
SQ. FT. CONSTRUCTED



**10000+**  
HAPPY FAMILIES



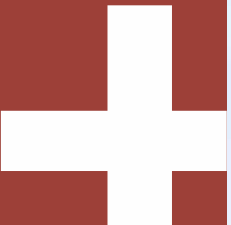
**55+**  
PROJECTS COMPLETED



“Continuing the unending legacy...”



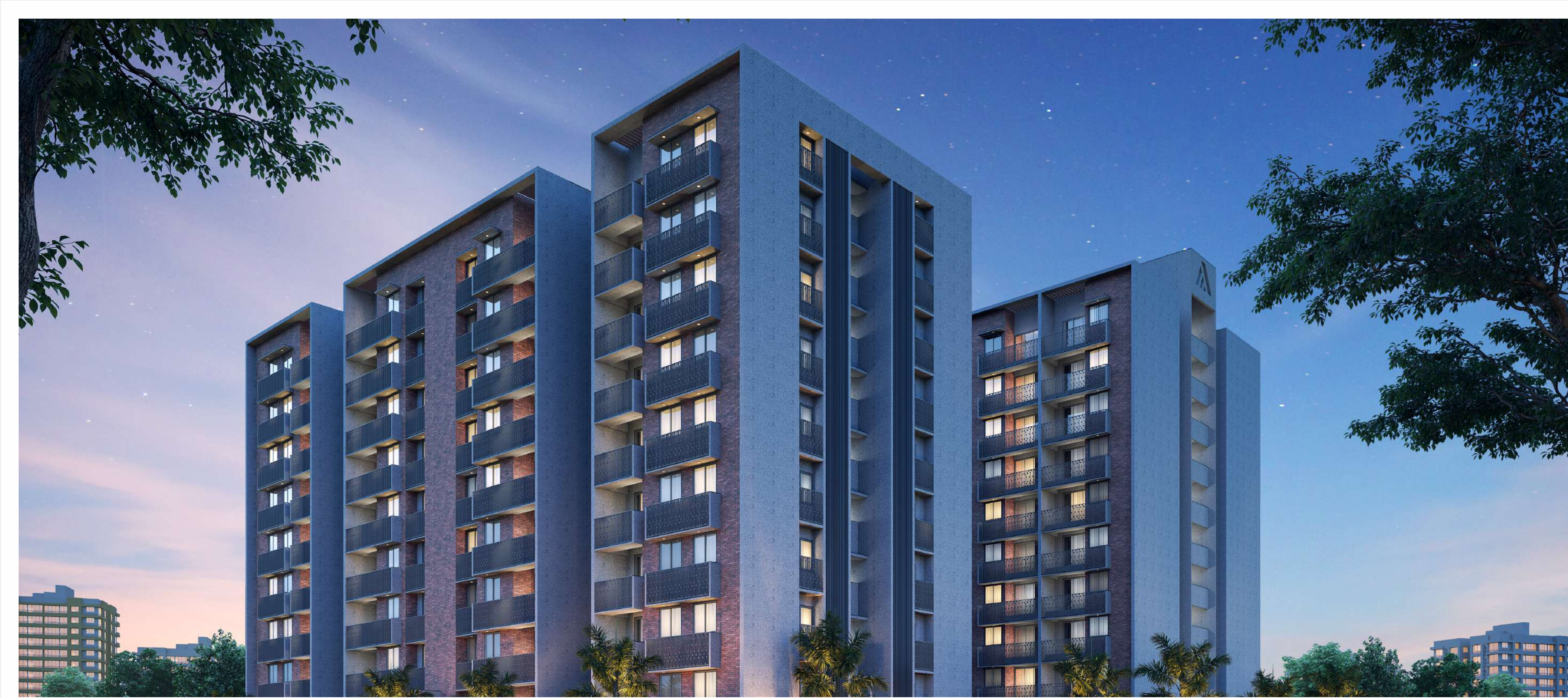
HOME +  
LANDSCAPING +  
AMENITIES +  
LIFESTYLE +  
COMMUNITY +  
CONNECTIVITY +





HOME THAT FEELS LIKE

*Plus* +  
with comfort, love, and luxury

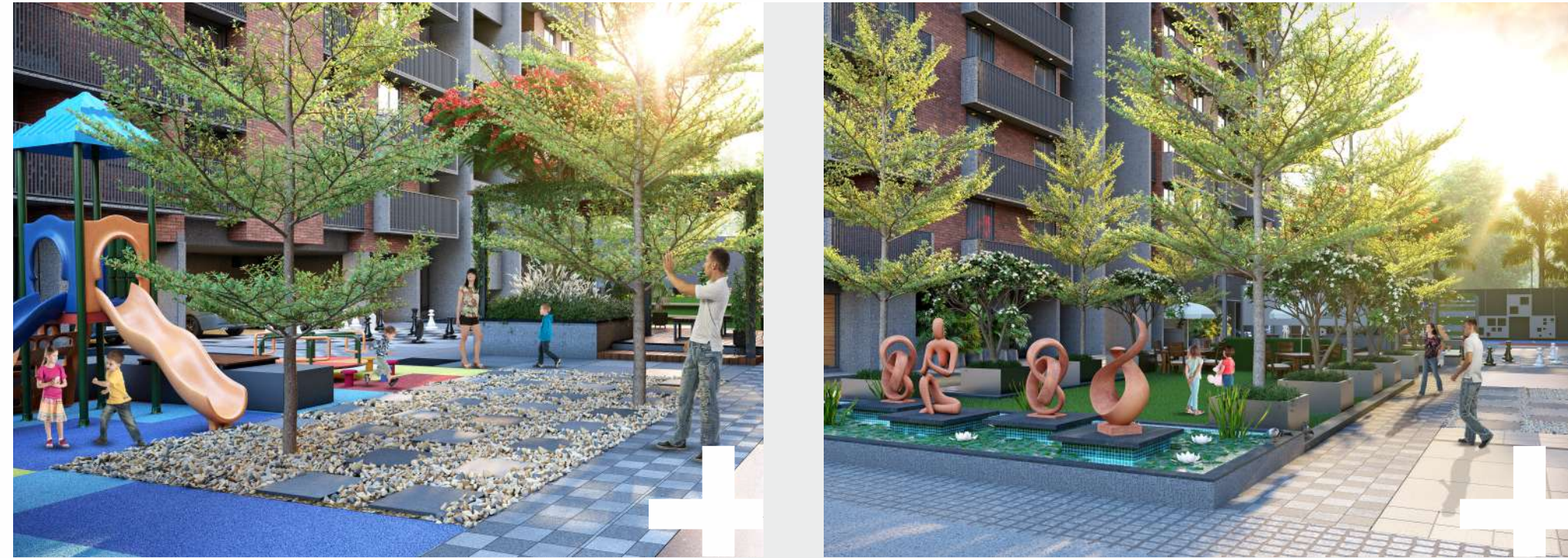


HOME THAT FEELS LIKE

**PLUS+**

WITH COMFORT, LOVE, AND LUXURY

# MESMERIZING MILIEU



For Your Beautiful Vibe



Children Play Area



Garden



Gazebo



Sitting Area



Live Chess





## OUTDOOR AMENITIES



“For Your Amazing Life”



# INDOOR AMENITIES



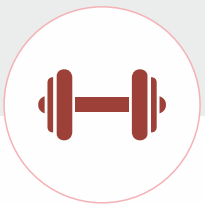
For Your Amazing Life



Grand Entrance Foyer



Indoor Gaming Zone



Indoor Gym



## LAVISH LIFESTYLE



“For the luxury you deserve”



# MODERN METRO



A graphic illustration divided into three sections. The left section shows a blue train on tracks with the text "CONNECTIVITY +" above it. The middle section shows a woman in a white dress and hat standing on a balcony with a railing, with a tree and a building in the background. The right section has a brick wall background with the text "FOR THOSE WHO KNOWS THE VALUE OF +" and "1 BHK + 2 BHK +". The AASTHA PROJECTS logo is in the bottom right corner.

Magnificently connected to every part of the city



Metro



AMTS / BRTS



River Front

CAPTIVATING CITYSCAPE

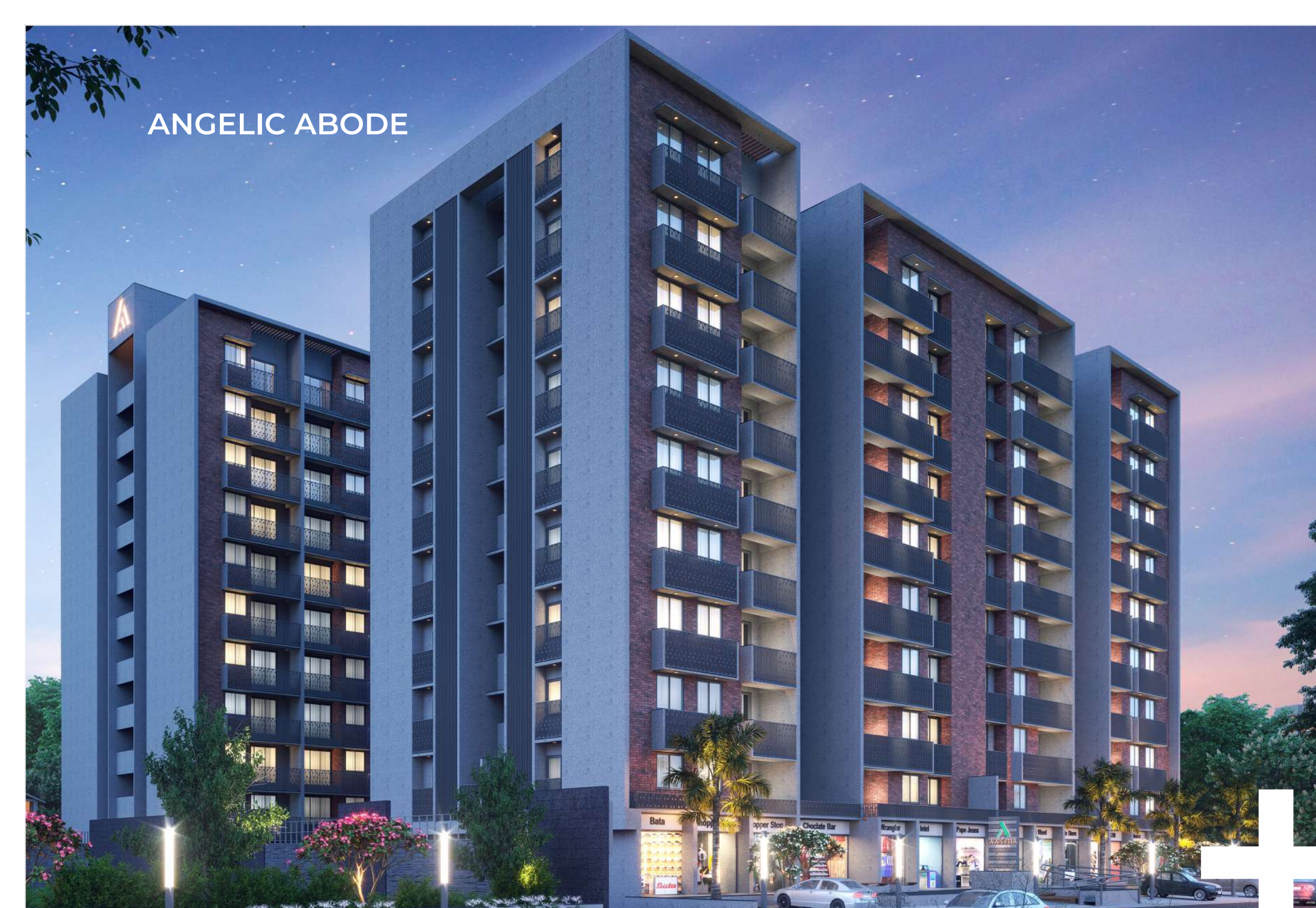


EXEMPLARY ELEVATION

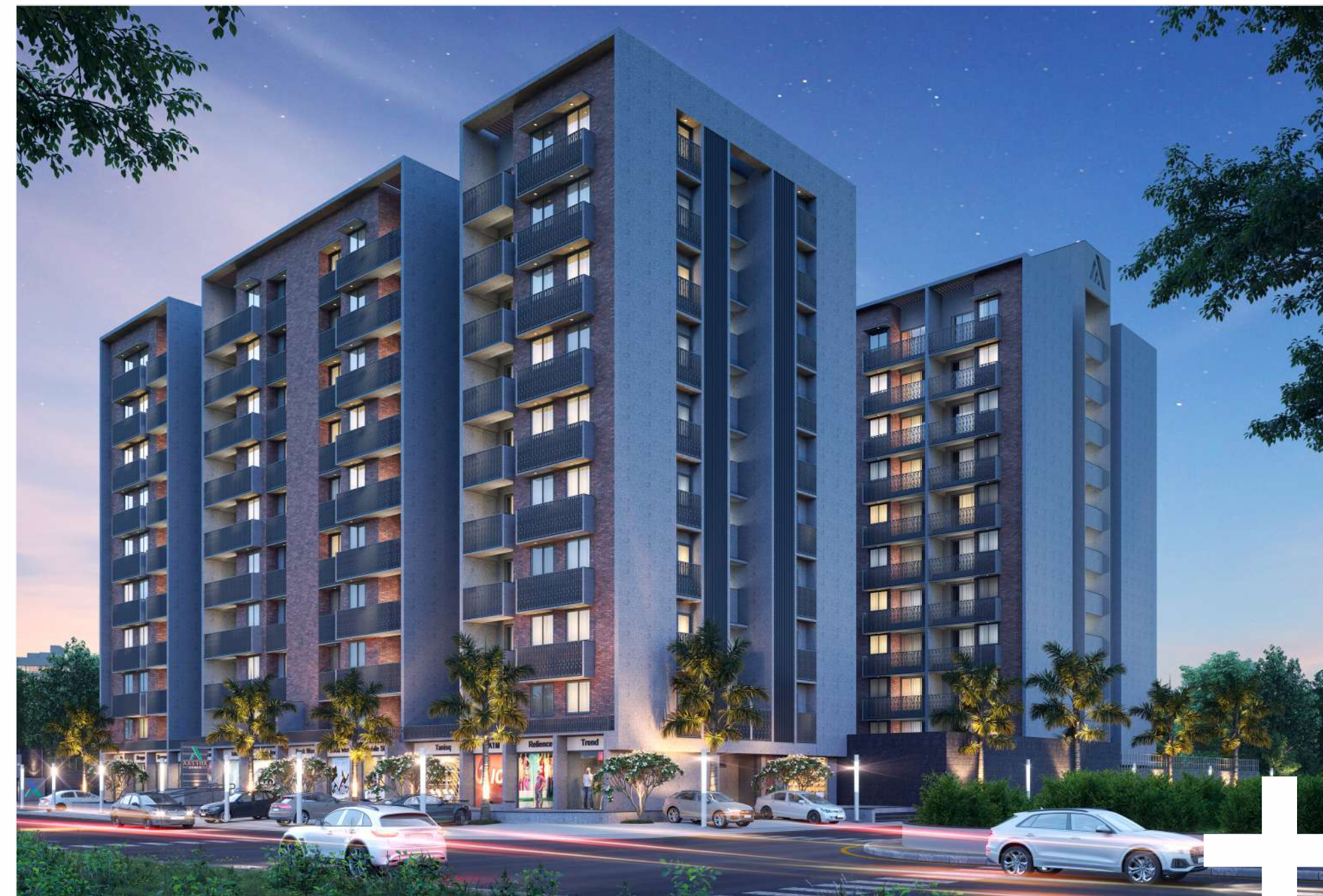


ANGELIC ABODE

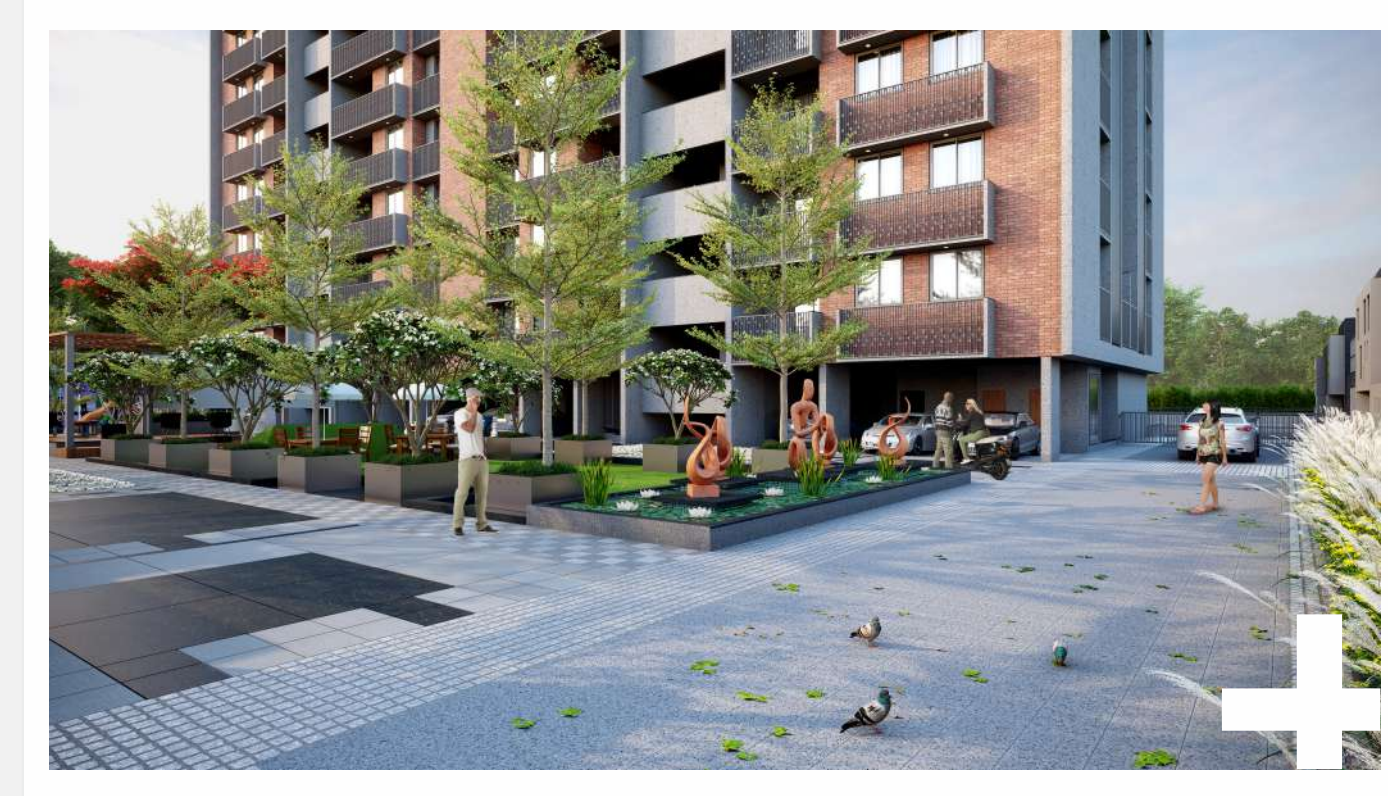
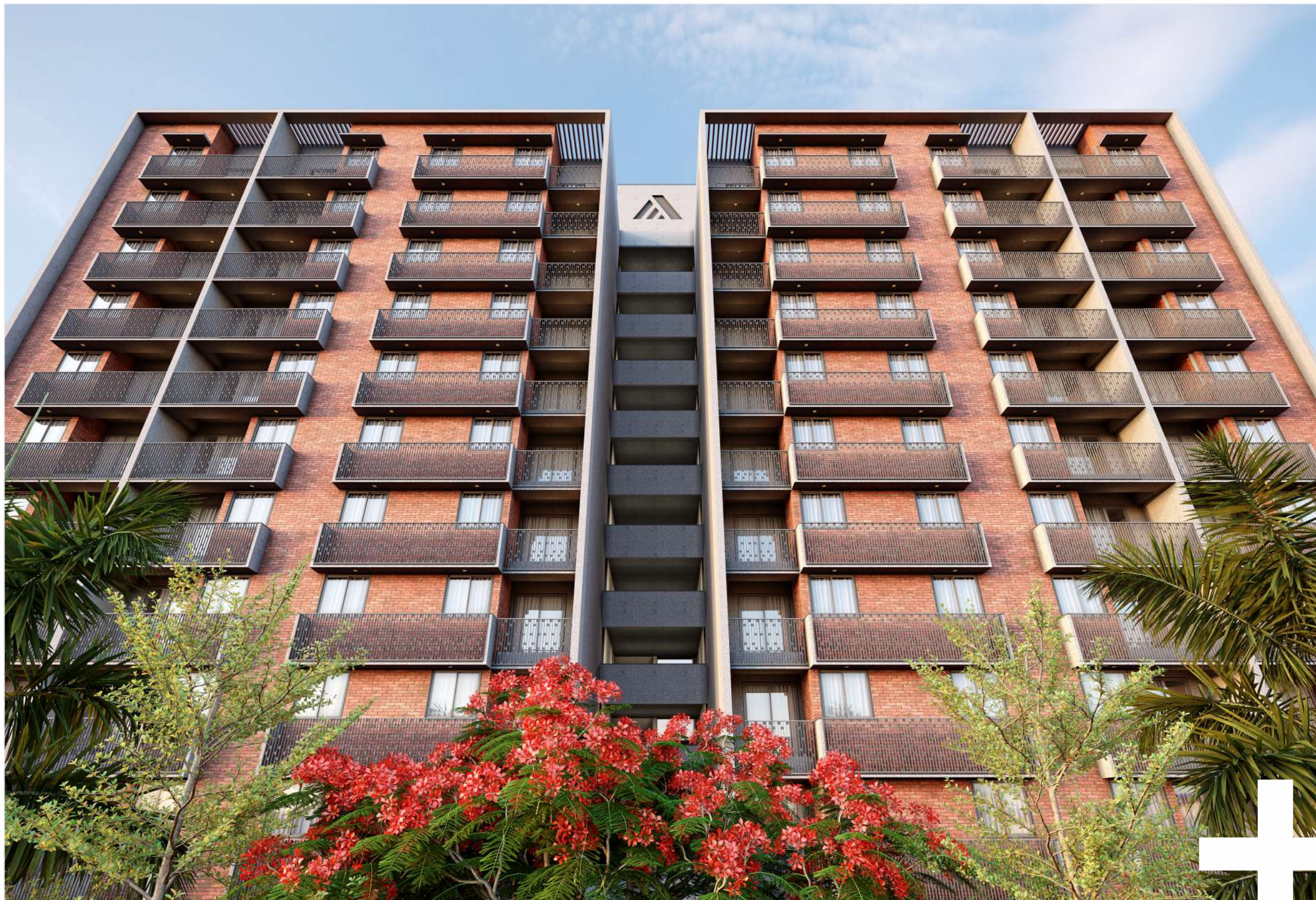
*Mesmerizing  
View*



ANGELIC ABODE



MESMERIZING VIEW

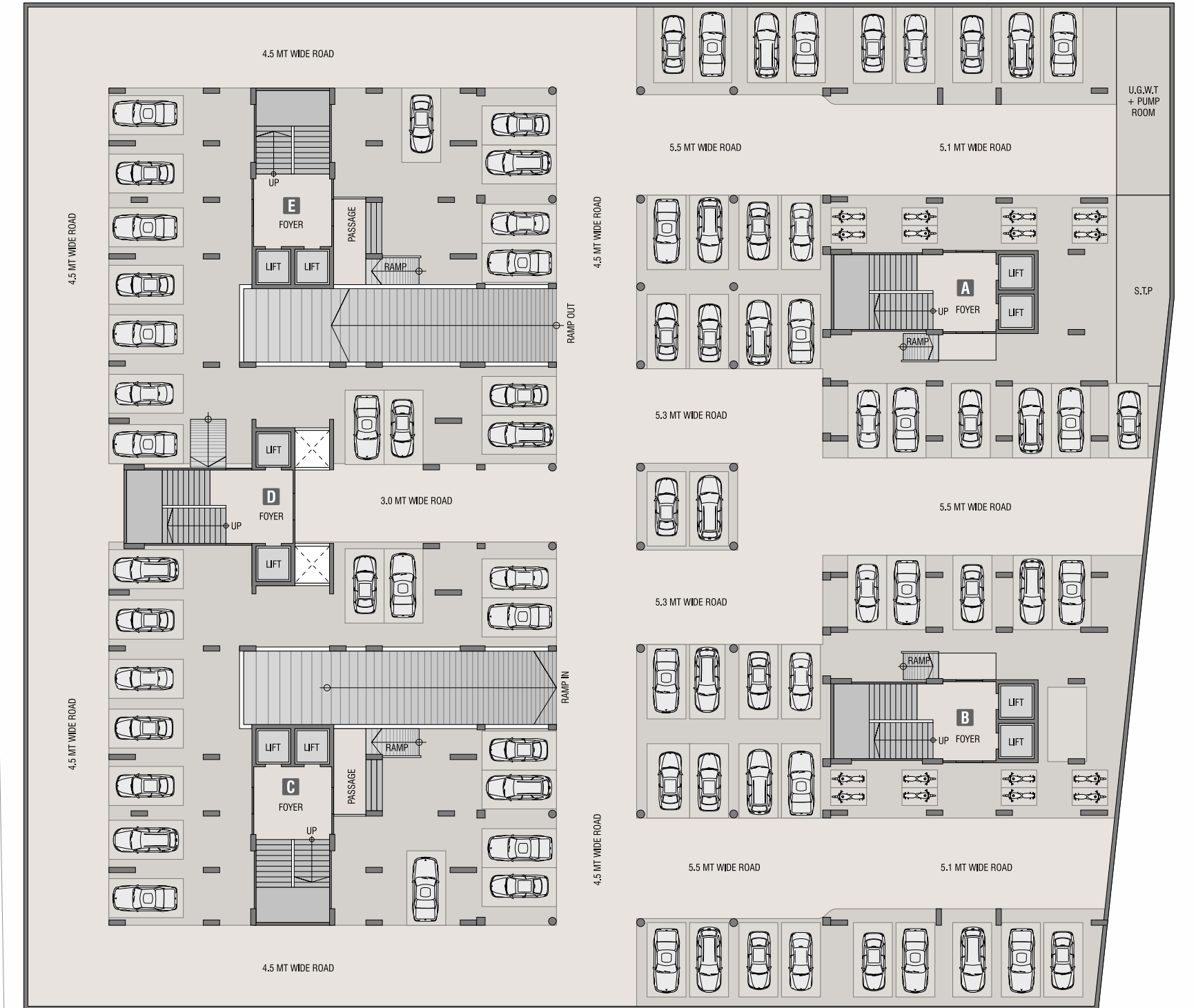


“For you to escape from your daily troubles”



# Basement

## Floor Plan



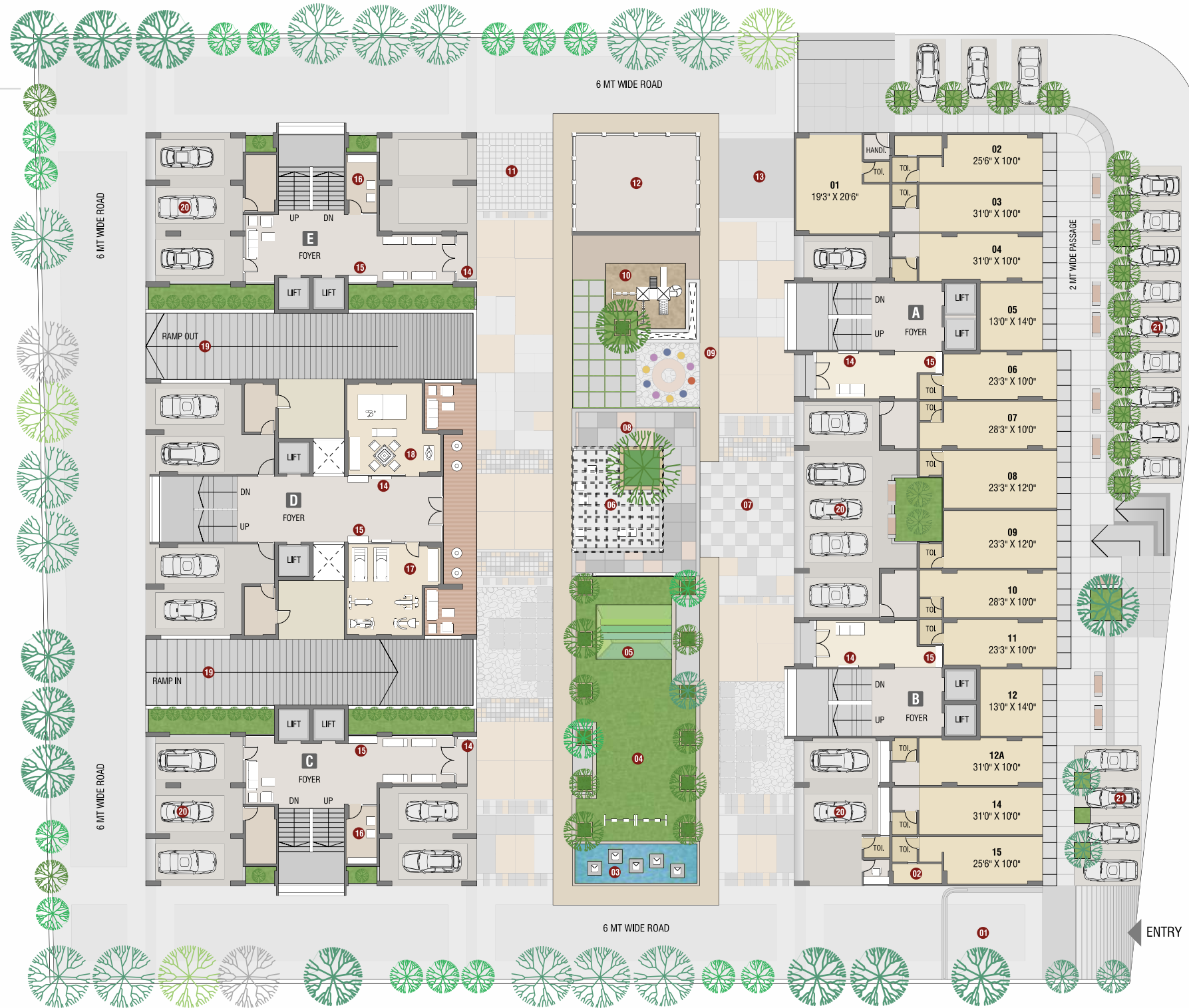


9 MT WIDE ROAD

# Ground Floor Plan

## Legend

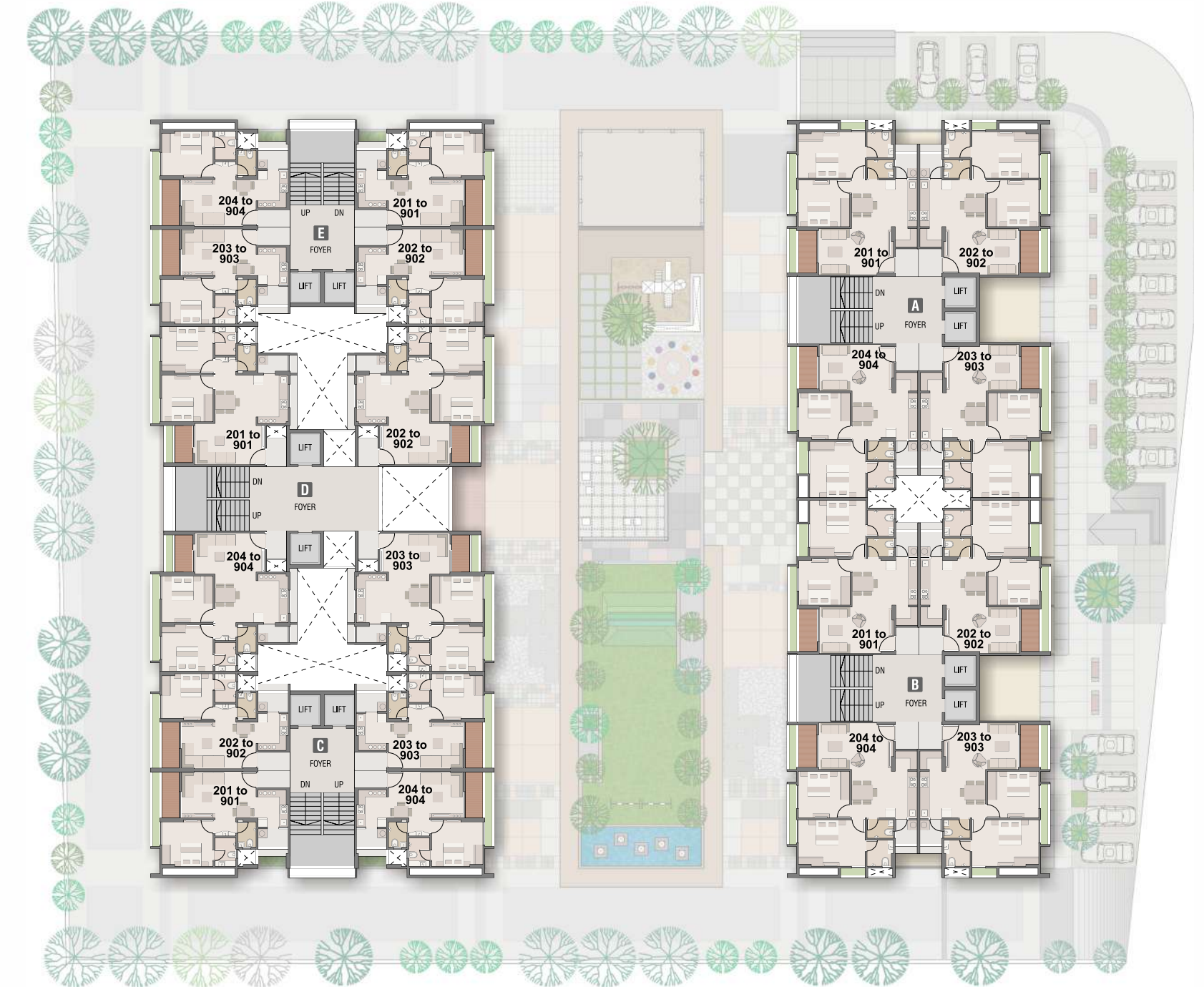
- 01 Entrance Gate
- 02 Security Cabin
- 03 Water Body
- 04 Party Lawn
- 05 Amphitheater
- 06 Gazebo
- 07 Chess Floor
- 08 Senior Citizen Area
- 09 Jogging Track
- 10 Kids Play Area With Mom's Plaza
- 11 Fountain Splash
- 12 Transformer
- 13 Maze Walk
- 14 Name Plates
- 15 Mail Box
- 16 Reading Zone
- 17 Gymnasium
- 18 Indoor Game
- 19 Basement Parking
- 20 Parking
- 21 Shop Parking



# TYPICAL

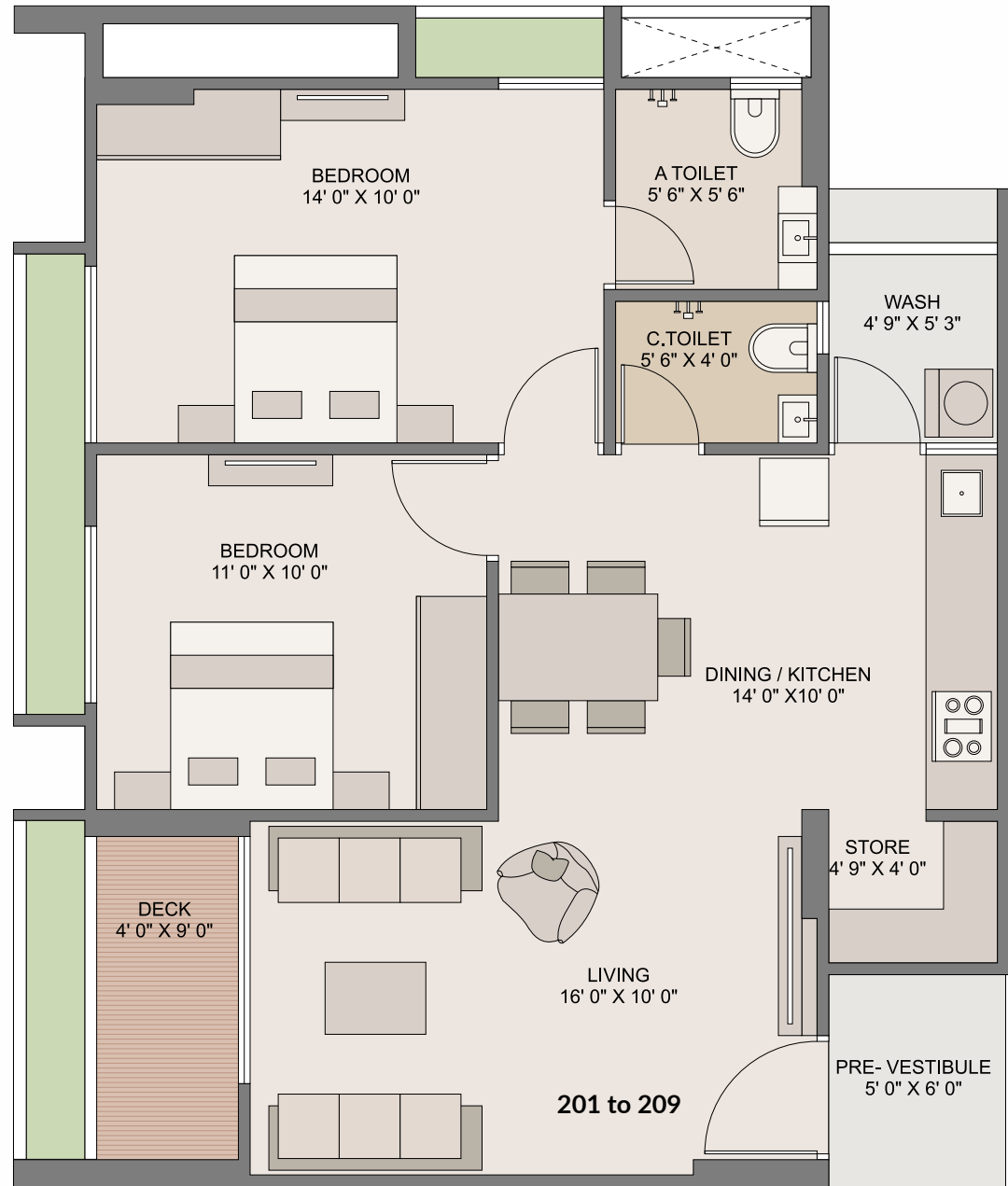
## 2<sup>nd</sup> to 9<sup>th</sup> Floor Plan

12 MT WIDE ROAD



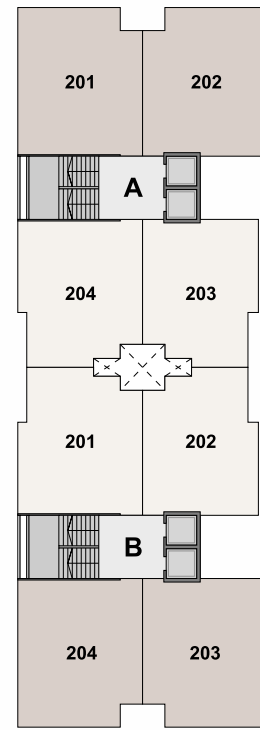
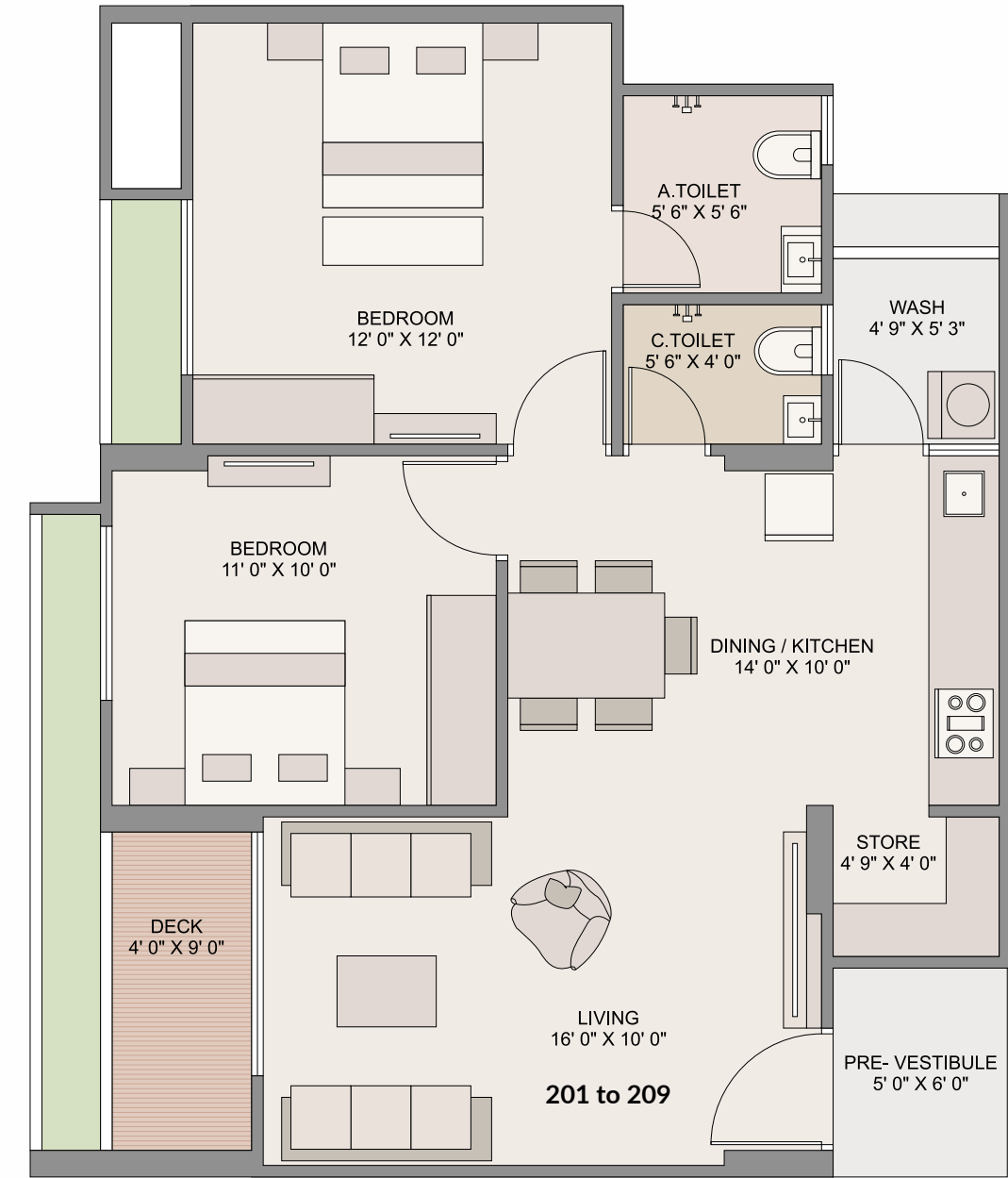
**TYPICAL FLOOR PLAN  
2BHK**

Type 01  
B.A. - 770Sq. Ft.

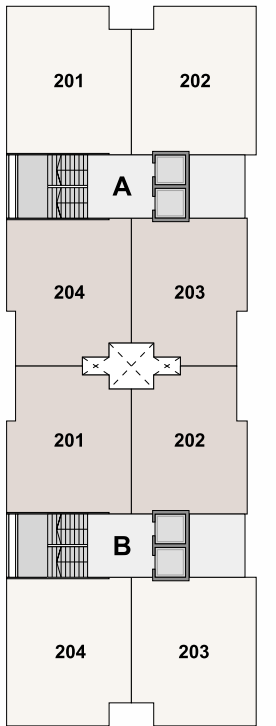


**TYPICAL FLOOR PLAN  
2BHK**

Type 02  
B.A. - 770Sq. Ft.



**BLOCK A & B**



**BLOCK A & B**

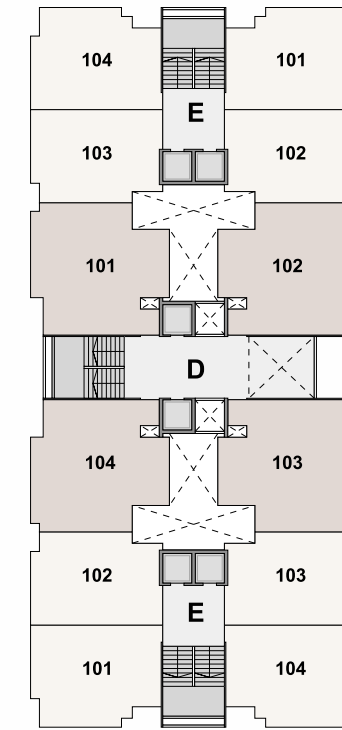
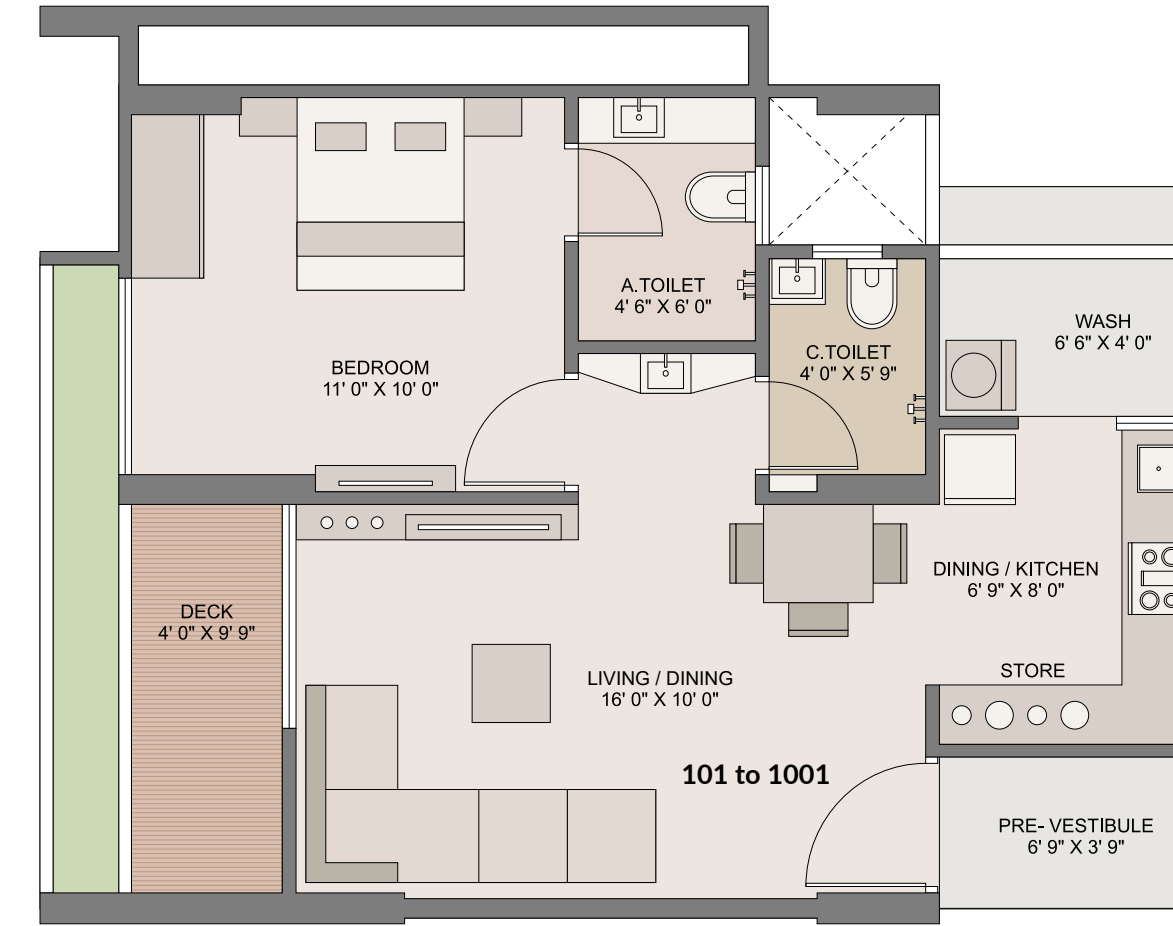
**TYPICAL FLOOR PLAN  
2BHK**

B.A. - 700Sq. Ft.

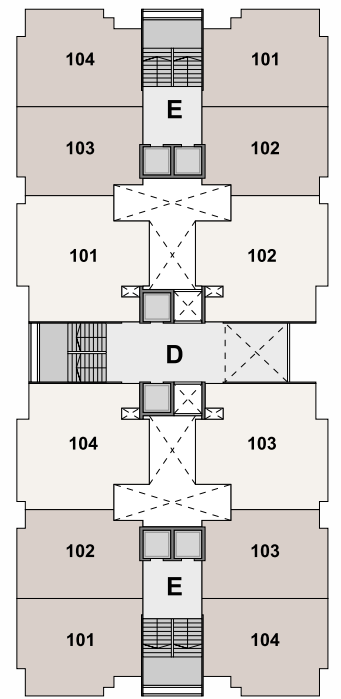


**TYPICAL FLOOR PLAN  
1BHK**

B.A. - 520 Sq. Ft.

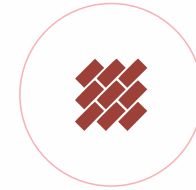


**BLOCK C, D & E**



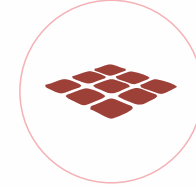
**BLOCK C, D & E**

## Specifications



### RCC

- Structure designed with earthquake resistant frame



### FLOORING

- 2 ft x 2 ft vitrified flooring in entire flat
- Lobby with vitrified tiles and granite
- Lift wall cladding granite / paint



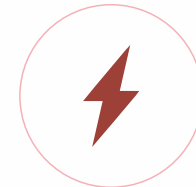
### BATHROOM

- Glazed tile dado in all toilets



### WALL FINISHES

- External – Smooth face finished plaster with white wash.
- Internal - Sand face plaster with white wash.



### ELECTRICAL

- Concealed 3 phase copper wiring with sufficient electrical points in all rooms.
- Modular switches, ISI wires, MCD & ELCB



### KITCHEN

- Granite platform with SS Sink and glazed tiles dado up to lintel level



## Amenities



Children Play Area



Garden



Gazebo



Balcony



Metro



Live Chess



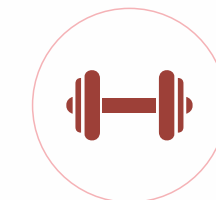
Grand Entrance Foyer



Sitting Area



Indoor Gaming Zone



Indoor Gym



Parking

# TRUE TRANQUILITY



**Disclaimer:** Stamp Duty, Registration Charges, Legal Documentation Charges, GST, Maintenance Deposit, Fix Maintenance Charges and Electrical Co. Charges including cable and sub-station cost shall be borne by the Member / Customer / Purchaser. | Any additional Charges, Taxes, Cess or Duties levied by the Government/Local authorities prior, during or after the completion of the scheme will be borne by the Member / Customer / Purchaser. | The furniture and fixtures, electrical appliances and other loose items shown in the brochure are only for illustrative purposes and do not form a part of the standard product on sale. | The furniture layout shown in the brochure is only suggestive and subject to change as per site conditions and as per the instructions of the Project Architect. | The Promoter / Developer reserves the right to make changes in the Project, its amenities and specifications as may be suggested by the Project Architect or the Structure consultant and any such changes made shall be binding on the customers / members / Purchasers of the Project. | The Promoter / Developer reserves the right to make minor on site changes during the course of construction and such changes shall be binding on all the members / customers / Purchasers of the Project. The dimensions shown in the brochure are approximate and calculated from unfinished surfaces and are rounded off to nearest whole number. | In all images (interior and exterior views) - All elements, objects, treatment, materials, equipment and colour schemes shown are artist's impression. Actual may be different as per architect's design. | Subject to Ahmedabad Jurisdiction.

## Nearby Commune

Sabarmati Riverfront	1 Min	Apollo Hospital	2 Min	H. B. Kapadia School	10 Min
City Pulse, City Gold Multiplex	7 Min	PVR, Ring Road & BRTS	5 Min	Apollo Hospital	2 Min

**YEARS OF LEGACY**  
CREATING MILESTONES

**ASTHA**  
PROJECTS



**SKY**  
GREENS

SIGNATURE  
**3 & 4 BHK**  
APARTMENTS



**Green Valley**  
Live in sync with nature

**2 & 3 BHK**  
LUXURIOUS APARTMENTS



**SHAHIKUTIR**  
GREENS

PRESIDENTIAL  
STANDARD OF **LIFESTYLE**



**Contact :**

+91 70690 48899 | +91 79001 50783

**Site Address :**

Aastha Homes, Rajyash City Road,  
Opp. Swaminarayan Park-4. B/h  
G.B. Shah College, Vasna, Abd-380051

**Website :**

[www.aasthaprojects.com](http://www.aasthaprojects.com)

**Architect & Landscape :**

PDC

**Structure Eng. :**

Parvati Techno Consultants

**Developer :**

Sampad Infrastructure

**3D images and Walkthrough :**

Goldenbull

**Idea & Concept :**

Viraj Shah



Designed By **GOLDEN BULL**  
Entertainment